

# Meter Specification 2017-18



# **ARAD**

# **Meter Specification**

METER TYPE	METER SPECIFICATION	
<b>15mm 3G Concentric Meter</b> <b>AMR Transmission –</b> <b>Current Reading, 10 End of</b> <b>Month Historical Reads,</b> <b>alarms etc. plus 4000 point</b> <b>data logger</b>	<b>Meter Thread Size</b>	G1½
	<b>MID Compliant</b>	Yes
	<b>Register</b>	IP68
	<b>Maximum Working Pressure</b>	16 bar
	<b>Maximum Working Temperature</b>	50°C
	<b>B – Width (mm)</b>	103
	<b>H – Height (mm)</b>	141
	<b>Weight (kg)</b>	0.66
	<b>Maximum Flow Rate (m³/h) – Q4</b>	2
	<b>Nominal Flow Rate (m³/h) – Q3</b>	1.6
	<b>Transitional Flow Rate (l/h) – Q2</b>	8
	<b>Minimum Flow Rate (l/h) – Q1</b>	5
	<b>R Q3/Q1</b>	315
	<b>Number of Maximum Index Dials</b>	5
	<b>Meter Material</b>	Highly reinforced composite
	<b>Maximum Register Capacity (m³)</b>	99,999
	<b>Minimum Register Capacity (l)</b>	0.02
<b>Sensitivity (l/h)</b>	1	
<b>WRAS approved for Contaminated Land</b>	Yes	
<b>Output Options – Optical Encoder</b>	Standard Specification – 1 Pulse per Litre	



METER TYPE	METER SPECIFICATION	
<b>20mm 3G Concentric Meter</b> <b>AMR Transmission –</b> <b>Current Reading, 10 End of</b> <b>Month Historical Reads,</b> <b>alarms etc. plus 4000 point</b> <b>data logger</b>	<b>Meter Thread Size</b>	G1½
	<b>MID Compliant</b>	Yes
	<b>Register</b>	IP68
	<b>Maximum Working Pressure</b>	16 bar
	<b>Maximum Working Temperature</b>	50°C
	<b>B – Width (mm)</b>	103
	<b>H – Height (mm)</b>	141
	<b>Weight (kg)</b>	0.66
	<b>Maximum Flow Rate (m³/h) – Q4</b>	3.125
	<b>Nominal Flow Rate (m³/h) – Q3</b>	2.5
	<b>Transitional Flow Rate (l/h) – Q2</b>	10
	<b>Minimum Flow Rate (l/h) – Q1</b>	6.25
	<b>R Q3/Q1</b>	400
	<b>Number of Maximum Index Dials</b>	5
	<b>Meter Material</b>	Highly reinforced composite
	<b>Maximum Register Capacity (m³)</b>	99,999
	<b>Minimum Register Capacity (l)</b>	0.02
	<b>Sensitivity (l/h)</b>	1
<b>WRAS approved for Contaminated Land</b>	Yes	
<b>Output Options – Optical Encoder</b>	Standard Specification – 1 Pulse per Litre	



METER TYPE	METER SPECIFICATION	
<p><b>15mm 3G Inline Meter</b>  <b>AMR Transmission –</b>  <b>Current Reading, 10 End of</b>  <b>Month Historical Reads,</b>  <b>alarms etc. plus 4000 point</b>  <b>data logger</b></p>	<b>Meter Thread Size</b>	G¾
	<b>MID Compliant</b>	Yes
	<b>Register</b>	IP68
	<b>Maximum Working Pressure</b>	16 bar
	<b>Maximum Working Temperature</b>	50°C
	<b>B – Width (mm)</b>	103
	<b>H – Height (mm)</b>	151
	<b>Weight (kg)</b>	0.66
	<b>Maximum Flow Rate (m³/h) – Q4</b>	2
	<b>Nominal Flow Rate (m³/h) – Q3</b>	1.6
	<b>Transitional Flow Rate (l/h) – Q2</b>	8
	<b>Minimum Flow Rate (l/h) – Q1</b>	5
	<b>R Q3/Q1</b>	315
	<b>Number of Maximum Index Dials</b>	5
	<b>Meter Material</b>	Highly reinforced composite
	<b>Maximum Register Capacity (m³)</b>	99,999
	<b>Minimum Register Capacity (l)</b>	0.02
<b>Sensitivity (l/h)</b>	1	
<b>WRAS approved for Contaminated Land</b>	Yes	
<b>Output Options – Optical Encoder</b>	Standard Specification – 1 Pulse per Litre	



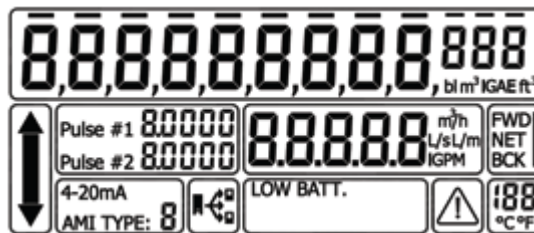
METER TYPE	METER SPECIFICATION	
<b>25mm Inline Meter</b>	Meter Thread Size	G1¼
	MID Compliant	Yes
	Register	IP68
	Maximum Working Pressure	16 bar
	Maximum Working Temperature	50°C
	B – Width (mm)	117
	H – Height (mm)	133
	Weight (kg)	3.21
	Maximum Flow Rate (m³/h) – Q4	7
	Nominal Flow Rate (m³/h) – Q3	3.5
	Transitional Flow Rate (l/h) – Q2	40.25
	Minimum Flow Rate (l/h) – Q1	26.25
	R Q3/Q1	130
	Number of Maximum Index Dials	5
	Meter Material	Brass
	Maximum Register Capacity (m³)	99,999
Minimum Register Capacity (l)	0.02	
Output Options – Tagus Sensor	Standard Specification – 1 Pulse per Litre	



METER TYPE	METER SPECIFICATION	
<b>40mm MS Meter</b>	Meter Thread Size	G2
	MID Compliant	Yes
	Register	IP68
	Maximum Working Pressure	10 bar
	Maximum Working Temperature	0.1 up to 50°C
	B – Width (mm)	125
	H – Height (mm)	140
	Weight (kg)	4.1
	Maximum Flow Rate (m <sup>3</sup> /h) – Q4	20
	Nominal Flow Rate (m <sup>3</sup> /h) – Q3	16
	Transitional Flow Rate (l/h) – Q2	0.205
	Minimum Flow Rate (l/h) – Q1	0.13
	R Q3/Q1	125
	Number of Maximum Index Dials	6
	Meter Material	Brass
	Maximum Register Capacity (m <sup>3</sup> )	999,999
Minimum Register Capacity (l)	0.5	
Output Options – WST/MS Sensor	Standard Specification – 1 Pulse per 10 Litres	

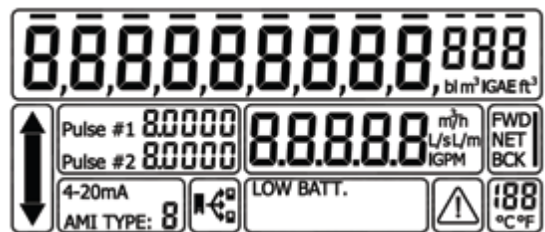


METER TYPE	METER SPECIFICATION	
<b>40mm Octave Meter</b>	Meter Thread Size	G2
	MID Compliant	Yes
	Register	IP68
	Maximum Working Pressure	16 bar
	Maximum Working Temperature	0.1 up to 50°C
	L – Length w/o Couplings (mm)	300
	B – Width (mm)	113
	H – Height (mm)	155
	h – Height (mm)	35
	Weight (kg)	1.4
	Maximum Flow Rate (m <sup>3</sup> /h) – Q4	50
	Nominal Flow Rate (m <sup>3</sup> /h) – Q3	40
	Transitional Flow Rate (l/h) – Q2	0.256
	Minimum Flow Rate (l/h) – Q1	0.16
	R Q3/Q1	250
	Display Units	Multi line 9 digit LC Display
	Water Temperature Display °C	(Flow rate & volume units are programmable)
	Meter Material	Highly reinforced composite
	Maximum Register Capacity (m <sup>3</sup> )	999,999,999
	Minimum Register Capacity (l)	2
Sensitivity (l/h)	25	
Output Options - Analog Output, Digital (pulse) Output, Dry Contact Output, Encoder Output, Modbus Protocol Output	SW Standard Specification – Double Digital Pulsed Output 10 Litres Forward and Reverse	

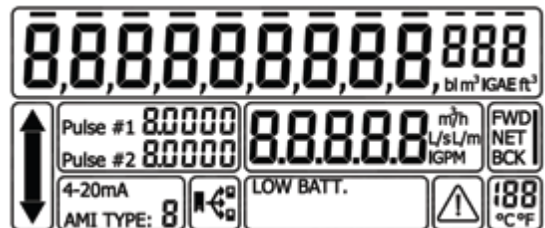




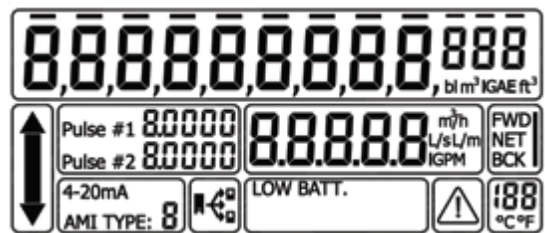
METER TYPE	METER SPECIFICATION	
50mm Octave Meter	MID Compliant	Yes
	Register	IP68
	Maximum Working Pressure	16 bar
	Maximum Working Temperature	0.1 up to 50°C
	L – Length w/o Couplings (mm)	200
	B – Width (mm)	165
	H – Height (mm)	194
	h – Height (mm)	40
	Weight (kg)	9
	Maximum Flow Rate (m³/h) – Q4	50
	Nominal Flow Rate (m³/h) – Q3	40
	Transitional Flow Rate (l/h) – Q2	0.125
	Minimum Flow Rate (l/h) – Q1	0.080
	R Q3/Q1	500
	Display Units Water Temperature Display °C	Multi line 9 digit LC Display (Flow rate & volume units are programmable)
	Meter Material	Cast Iron
	Maximum Register Capacity (m³)	999,999,999
	Minimum Register Capacity (l)	2
Sensitivity (l/h)	25	
Output Options - Analog Output, Digital (pulse) Output, Dry Contact Output, Encoder Output, Modbus Protocol Output	SW Standard Specification – Double Digital Pulsed Output 10 Litres Forward and Reverse	



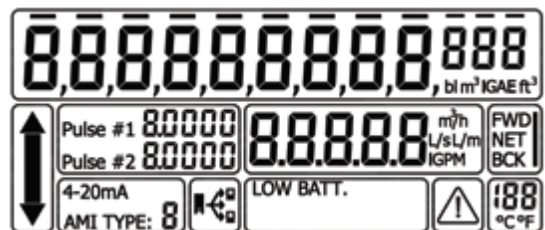
METER TYPE	METER SPECIFICATION	
<b>65mm Octave Meter (Non Stock Item)</b>	<b>MID Compliant</b>	Yes
	<b>Register</b>	IP68
	<b>Maximum Working Pressure</b>	16 bar
	<b>Maximum Working Temperature</b>	0.1 up to 50°C
	<b>L – Length w/o Couplings (mm)</b>	200
	<b>B – Width (mm)</b>	185
	<b>H – Height (mm)</b>	210
	<b>h – Height (mm)</b>	90
	<b>Weight (kg)</b>	11.5
	<b>Maximum Flow Rate (m<sup>3</sup>/h) – Q4</b>	50
	<b>Nominal Flow Rate (m<sup>3</sup>/h) – Q3</b>	40
	<b>Transitional Flow Rate (l/h) – Q2</b>	0.125
	<b>Minimum Flow Rate (l/h) – Q1</b>	0.080
	<b>R Q3/Q1</b>	500
	<b>Display Units</b> <b>Water Temperature Display °C</b>	Multi line 9 digit LC Display (Flow rate & volume units are programmable)
	<b>Meter Material</b>	Cast Iron
	<b>Maximum Register Capacity (m<sup>3</sup>)</b>	999,999,999
	<b>Minimum Register Capacity (l)</b>	2
<b>Sensitivity (l/h)</b>	25	
<b>Output Options - Analog Output, Digital (pulse) Output, Dry Contact Output, Encoder Output, Modbus Protocol Output</b>	SW Standard Specification – Double Digital Pulsed Output 10 Litres Forward and Reverse	



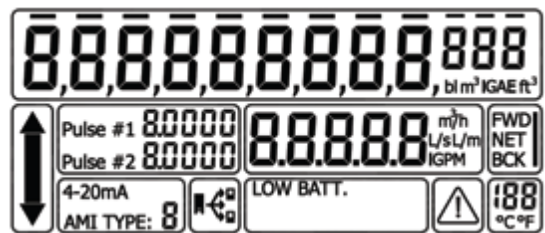
METER TYPE	METER SPECIFICATION	
<b>80mm Octave Meter</b>	<b>MID Compliant</b>	Yes
	<b>Register</b>	IP68
	<b>Maximum Working Pressure</b>	16 bar
	<b>Maximum Working Temperature</b>	0.1 up to 50°C
	<b>L – Length w/o Couplings (mm)</b>	225
	<b>B – Width (mm)</b>	200
	<b>H – Height (mm)</b>	210
	<b>h – Height (mm)</b>	90
	<b>Weight (kg)</b>	13
	<b>Maximum Flow Rate (m³/h) – Q4</b>	80
	<b>Nominal Flow Rate (m³/h) – Q3</b>	63
	<b>Transitional Flow Rate (l/h) – Q2</b>	0.200
	<b>Minimum Flow Rate (l/h) – Q1</b>	0.125
	<b>R Q3/Q1</b>	500
	<b>Display Units</b> <b>Water Temperature Display °C</b>	Multi line 9 digit LC Display (Flow rate & volume units are programmable)
	<b>Meter Material</b>	Cast Iron
	<b>Maximum Register Capacity (m³)</b>	999,999,999
	<b>Minimum Register Capacity (l)</b>	2
<b>Sensitivity (l/h)</b>	25	
<b>Output Options - Analog Output, Digital (pulse) Output, Dry Contact Output, Encoder Output, Modbus Protocol Output</b>	SW Standard Specification – Double Digital Pulsed Output 10 Litres Forward and Reverse	



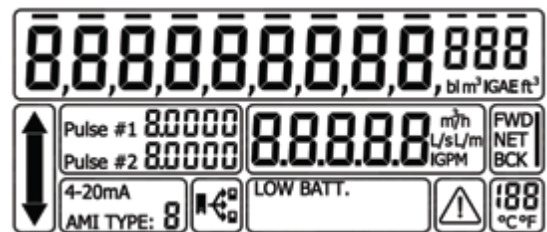
METER TYPE	METER SPECIFICATION	
<b>100mm Octave Meter</b>	<b>MID Compliant</b>	Yes
	<b>Register</b>	IP68
	<b>Maximum Working Pressure</b>	16 bar
	<b>Maximum Working Temperature</b>	0.1 up to 50°C
	<b>L – Length w/o Couplings (mm)</b>	250
	<b>B – Width (mm)</b>	220
	<b>H – Height (mm)</b>	223
	<b>h – Height (mm)</b>	103
	<b>Weight (kg)</b>	15
	<b>Maximum Flow Rate (m<sup>3</sup>/h) – Q4</b>	125
	<b>Nominal Flow Rate (m<sup>3</sup>/h) – Q3</b>	100
	<b>Transitional Flow Rate (l/h) – Q2</b>	0.320
	<b>Minimum Flow Rate (l/h) – Q1</b>	0.200
	<b>R Q3/Q1</b>	500
	<b>Display Units</b> <b>Water Temperature Display °C</b>	Multi line 9 digit LC Display (Flow rate & volume units are programmable)
	<b>Meter Material</b>	Cast Iron
	<b>Maximum Register Capacity (m<sup>3</sup>)</b>	999,999,999
	<b>Minimum Register Capacity (l)</b>	2
<b>Sensitivity (l/h)</b>	25	
<b>Output Options - Analog Output, Digital (pulse) Output, Dry Contact Output, Encoder Output, Modbus Protocol Output</b>	SW Standard Specification – Double Digital Pulsed Output 10 Litres Forward and Reverse	



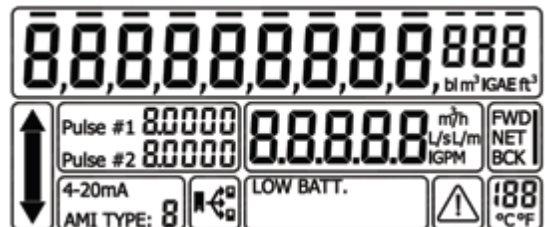
METER TYPE	METER SPECIFICATION	
<b>150mm Octave Meter</b>	<b>MID Compliant</b>	Yes
	<b>Register</b>	IP68
	<b>Maximum Working Pressure</b>	16 bar
	<b>Maximum Working Temperature</b>	0.1 up to 50°C
	<b>L – Length w/o Couplings (mm)</b>	300
	<b>B – Width (mm)</b>	285
	<b>H – Height (mm)</b>	282
	<b>h – Height (mm)</b>	140
	<b>Weight (kg)</b>	32
	<b>Maximum Flow Rate (m<sup>3</sup>/h) – Q4</b>	313
	<b>Nominal Flow Rate (m<sup>3</sup>/h) – Q3</b>	250
	<b>Transitional Flow Rate (l/h) – Q2</b>	0.800
	<b>Minimum Flow Rate (l/h) – Q1</b>	0.500
	<b>R Q3/Q1</b>	500
	<b>Display Units</b> <b>Water Temperature Display °C</b>	Multi line 9 digit LC Display (Flow rate & volume units are programmable)
	<b>Meter Material</b>	Cast Iron
	<b>Maximum Register Capacity (m<sup>3</sup>)</b>	999,999,999
	<b>Minimum Register Capacity (l)</b>	2
<b>Sensitivity (l/h)</b>	200	
<b>Output Options - Analog Output, Digital (pulse) Output, Dry Contact Output, Encoder Output, Modbus Protocol Output</b>	SW Standard Specification – Double Digital Pulsed Output 10 Litres Forward and Reverse	



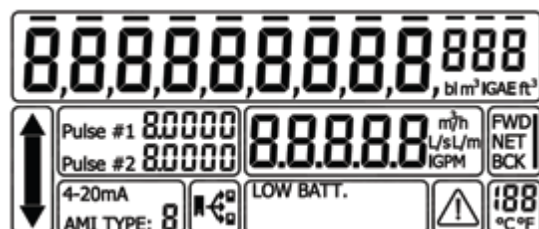
METER TYPE	METER SPECIFICATION	
<b>200mm Octave Meter</b>	<b>MID Compliant</b>	Yes
	<b>Register</b>	IP68
	<b>Maximum Working Pressure</b>	16 bar
	<b>Maximum Working Temperature</b>	0.1 up to 50°C
	<b>L – Length w/o Couplings (mm)</b>	350
	<b>B – Width (mm)</b>	340
	<b>H – Height (mm)</b>	332
	<b>h – Height (mm)</b>	165
	<b>Weight (kg)</b>	45
	<b>Maximum Flow Rate (m³/h) – Q4</b>	500
	<b>Nominal Flow Rate (m³/h) – Q3</b>	400
	<b>Transitional Flow Rate (l/h) – Q2</b>	1.280
	<b>Minimum Flow Rate (l/h) – Q1</b>	0.800
	<b>R Q3/Q1</b>	500
	<b>Display Units</b> <b>Water Temperature Display °C</b>	Multi line 9 digit LC Display (Flow rate & volume units are programmable)
	<b>Meter Material</b>	Cast Iron
	<b>Maximum Register Capacity (m³)</b>	999,999,999
<b>Minimum Register Capacity (l)</b>	2	
<b>Sensitivity (l/h)</b>	200	
<b>Output Options - Analog Output, Digital (pulse) Output, Dry Contact Output, Encoder Output, Modbus Protocol Output</b>	SW Standard Specification – Double Digital Pulsed Output 10 Litres Forward and Reverse	



METER TYPE	METER SPECIFICATION	
<b>250mm Octave Meter</b>	MID Compliant	Yes
	Register	IP68
	Maximum Working Pressure	16 bar
	Maximum Working Temperature	0.1 up to 50°C
	L – Length w/o Couplings (mm)	449
	B – Width (mm)	406
	H – Height (mm)	383
	h – Height (mm)	203
	Weight (kg)	68
	Maximum Flow Rate (m <sup>3</sup> /h) – Q4	1250
	Nominal Flow Rate (m <sup>3</sup> /h) – Q3	1000
	Transitional Flow Rate (l/h) – Q2	3.2
	Minimum Flow Rate (l/h) – Q1	2
	R Q3/Q1	500
	Display Units Water Temperature Display °C	Multi line 9 digit LC Display (Flow rate & volume units are programmable)
	Meter Material	Cast Iron
	Maximum Register Capacity (m <sup>3</sup> )	999,999,999
	Minimum Register Capacity (l)	5
Sensitivity (l/h)	500	
Output Options - Analog Output, Digital (pulse) Output, Dry Contact Output, Encoder Output, Modbus Protocol Output	SW Standard Specification – Double Digital Pulsed Output 10 Litres Forward and Reverse	



METER TYPE	METER SPECIFICATION	
<b>300mm Octave Meter</b>	MID Compliant	Yes
	Register	IP68
	Maximum Working Pressure	16 bar
	Maximum Working Temperature	0.1 up to 50°C
	L – Length w/o Couplings (mm)	499
	B – Width (mm)	489
	H – Height (mm)	456
	h – Height (mm)	245
	Weight (kg)	96
	Maximum Flow Rate (m³/h) – Q4	1250
	Nominal Flow Rate (m³/h) – Q3	1000
	Transitional Flow Rate (l/h) – Q2	3.2
	Minimum Flow Rate (l/h) – Q1	2
	R Q3/Q1	500
	Display Units Water Temperature Display °C	Multi line 9 digit LC Display (Flow rate & volume units are programmable)
	Meter Material	Cast Iron
	Maximum Register Capacity (m³)	999,999,999
	Minimum Register Capacity (l)	5
Sensitivity (l/h)	500	
Output Options - Analog Output, Digital (pulse) Output, Dry Contact Output, Encoder Output, Modbus Protocol Output	SW Standard Specification – Double Digital Pulsed Output 10 Litres Forward and Reverse	





METER TYPE	METER SPECIFICATION	
<b>15mm Sonata</b> (To Be Released)	<b>Meter Thread Size (mm &amp; inch)</b>	15mm / ½
	<b>MID Compliant</b>	Yes
	<b>Register</b>	IP68
	<b>Maximum Working Pressure</b>	16 bar
	<b>Maximum Working Temperature</b>	0.1 up to 50°C
	<b>L – Length w/o Couplings (mm)</b>	165
	<b>B – Width (mm)</b>	80
	<b>H – Height (mm)</b>	117
	<b>h – Height (mm)</b>	80
	<b>Weight (kg)</b>	0.900
	<b>Nominal Flow Rate (m³/h) – Q3</b>	1.6 (2.5)
	<b>Minimum Flow Rate (l/h) – Q1</b>	3.2 (5)
	<b>R Q3/Q1</b>	500
	<b>Display Units</b>	4,5,6,7,8 or 9
	<b>Meter Material</b>	PPS, highly reinforced composite
	<b>Maximum Register Capacity (m³)</b>	999,999,999
<b>Sensitivity (l/h)</b>	1	
<b>Output Options</b>	Multiple Radio Communication Options	



METER TYPE	METER SPECIFICATION	
<b>20mm Sonata</b> (To Be Released)	Meter Thread Size (mm & inch)	20mm / ¾
	MID Compliant	Yes
	Register	IP68
	Maximum Working Pressure	16 bar
	Maximum Working Temperature	0.1 up to 50°C
	L – Length w/o Couplings (mm)	190
	B – Width (mm)	80
	H – Height (mm)	117
	h – Height (mm)	80
	Weight (kg)	0.900
	Nominal Flow Rate (m³/h) – Q3	2.5 (4)
	Minimum Flow Rate (l/h) – Q1	5 (8)
	R Q3/Q1	500
	Display Units	4,5,6,7,8 or 9
	Meter Material	PPS, highly reinforced composite
	Maximum Register Capacity (m³)	999,999,999
Sensitivity (l/h)	1	
Output Options	Multiple Radio Communication Options	



METER TYPE	METER SPECIFICATION	
<b>25mm Sonata</b> (To Be Released)	Meter Thread Size (mm & inch)	25mm / 1
	MID Compliant	Yes
	Register	IP68
	Maximum Working Pressure	16 bar
	Maximum Working Temperature	0.1 up to 50°C
	L – Length w/o Couplings (mm)	230
	B – Width (mm)	80
	H – Height (mm)	121
	h – Height (mm)	82
	Weight (kg)	0.900
	Nominal Flow Rate (m <sup>3</sup> /h) – Q3	6.3 (4)
	Minimum Flow Rate (l/h) – Q1	12.6 (8)
	R Q3/Q1	500
	Display Units	4,5,6,7,8 or 9
	Meter Material	PPS, highly reinforced composite
	Maximum Register Capacity (m <sup>3</sup> )	999,999,999
Sensitivity (l/h)	1	
Output Options	Multiple Radio Communication Options	

